

Tewa Turning 20

Tewa (meaning support in Nepali) – the Nepal women’s fund was initiated in September 1995, and was formally registered with the Government of Nepal in April 1996. Tewa works to advance and empower women all over Nepal by fostering a culture of self-reliance through community philanthropy and grant making to organized groups of women throughout Nepal. Given its relatively short institutional history and its location in Nepal, Tewa has become a model for women’s organizations in Nepal and is the member of the International Network of Women’s Funds (INWF - which historically began in Tewa’s office in Nepal in 2000).

vulnerable groups who are also at the center of the human and women’s rights development.

Core programmes

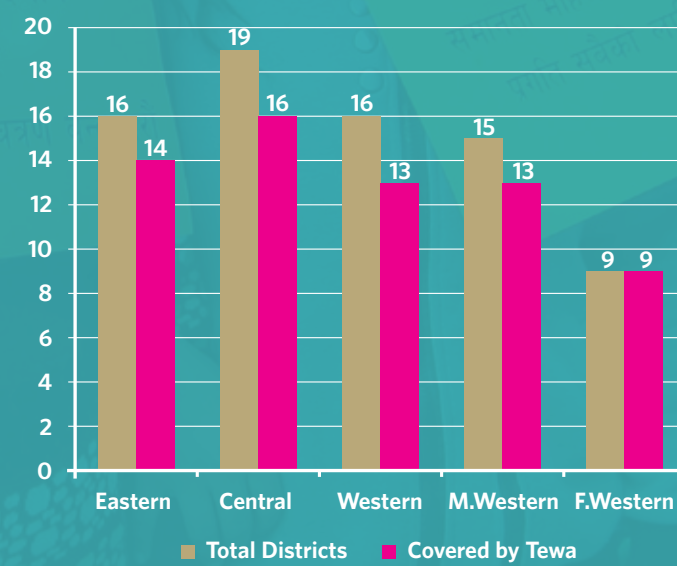
- Grant making to organized groups of women all over Nepal
- Community level local fund raising
- Volunteer capacity building and mobilization
- Engaging and educating community children in local philanthropy
- Resource generation from the running of the Tewa Centre for Tewa’s self reliance and sustainability

Learnings and the way forward

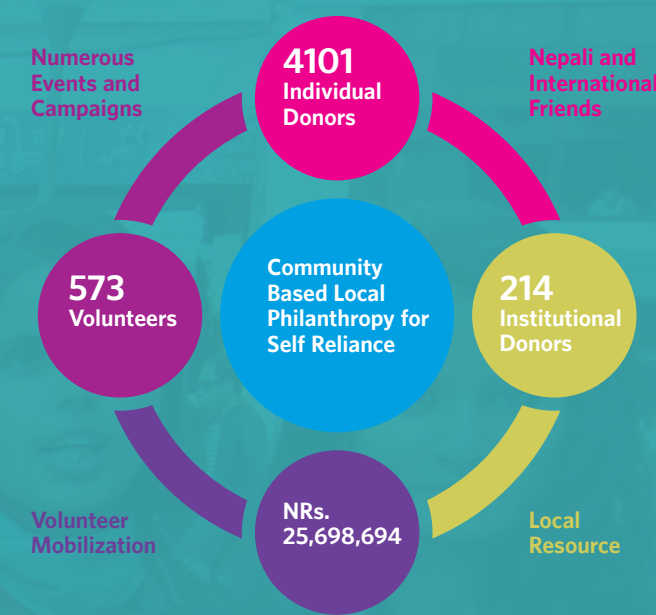
In its 20th year, Tewa has learnt that women on the ground are the best change agents in their communities. Over the course of its life, Tewa has nurtured a body of women confident in their own agency and in their felt advocacy needs through its consolidated work.

Tewa commits to support initiatives that increase collaboration, building alliances and advocacy for women’s human rights (social, economic and political rights). She will continue to support the most

Tewa GRANTS DISTRIBUTION ACCORDING TO DEVELOPMENT REGIONS AND DISTRICTS (AS OF JANUARY 2014)



Tewa’s FUNDRAISING AND GRANT MAKING



FOUNDER

Rita Thapa

BOARD MEMBERS

Amita Adhikary
Chhaya Jha
Draupadi Rokaya
Kamala Pradhan
Meera Jyoti
Meeta S. Pradhan
Nirmala K.C., PhD, *President*
Rama Shrestha, *Treasurer*
Riva Thapa, *General Secretary*
Usha Shrestha

GENERAL MEMBERS

Arina Arjyal, Dr.
Bijaya Subba
Chandni Singh Karki
Era Shrestha
Irina Shrestha
Kanchan Rana
Lamu Sherpa
Maggie Shah
Meera Arjyal
Mohinee Maharjan
Merita Kansakar
Narkumari Karki

Nita Lama
Pratima Kakshapati
Sheetal S. Bajracharya

STAFF

Amita Tamrakar
Finance Officer
Anima Shrestha
Admin Assistant
Anuja Shrestha
Grant Making Officer
Deepak Dewan
Development Director
Devi Bista
Finance Assistant
Laxmi Maharjan
Receptionist
Lilu K.C.
Philanthropy Manager
Roji Adhikary
Grant-making Program Assistant
Sadhana Shrestha
Executive Director
Srijana Thapa Pathak
Administrative Officer
Urmila Shrestha
Senior Program Officer
Yelisha Sharma
Learning, Evaluation & Communications Manager

SUPPORT STAFF

Daya Ram Khatri, *Messenger*
Dipak Shrestha, *Bus Helper*
Sheetal S. Bajracharya
Kancha Shrestha, *Driver*
Purnamaya Maharjan, *Helper*
Ram Deola, *Cleaner*
Shiva Raj Neupane, *Guard*

TEWA CENTRE STAFF

Geeta Shah, *Program Officer*
Meena Gurung, *Public Relation Officer*
Mukta Shrivastav, *Program Officer*
Sri Bahadur, *Gardener*
Kaldhar Nepali, *Gardener*
Keshar B. Maharjan, *Gardener*
Gita Ghimire, *Cook*
Saraswati Maharjan, *Homemaker*
Menuka Magarati, *Homemaker*
Rajani Ghimire, *Homemaker*
Sushma Maharjan, *Homemaker*
Radhika Shrestha, *Homemaker*
Nisha Poudyal, *Helper*
Mathura Giri, *Helper*
Shiva Sharan Bista, *Guard*
Jagannath Karki, *Guard*



Vision

Philanthropy for sustainable development and peace.

Mission

To enhance women’s voice and visibility to ensure their rights and informed participation through modern strategic philanthropy, to foster sustainable development in Nepal.



“Social Justice Philanthropy grounded in its Community is what Tewa believes in. Creating an enabling environment, with access, opportunities and resources for women is the way forward for NOW and for the FUTURE.”

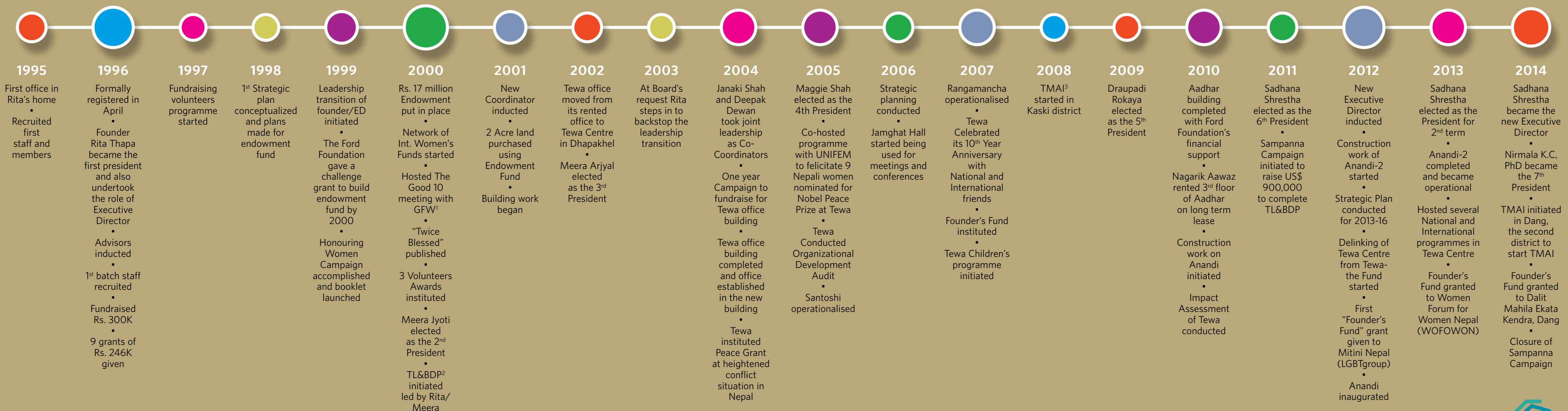
• Sadhana Shrestha, Executive Director, Tewa

“Tewa has traversed its two decade long journey by advocating for local philanthropy to help support organized groups of women throughout Nepal, who are eager and committed for their betterment and empowerment. We commit to give continuation to our work with renewed and added vigour to sustain peace and development in our communities.”

• Nirmala K.C., PhD, President, Tewa



Tewa Timeline / 09.1995 - 03.2014



¹ GFW : The Global Fund for Women, USA

² TL&BDP : Tewa Land and Building Development Project

³ TMAI : Tewa Model Adaptation Initiative

